



Connecting people who care
with local causes that matter

Annual Review 2017/2018

A quick summary of our year

£2,474,038



Total donations



£2,261,769



Total grants



560



Grants to organisations and individuals



151,000



Total number of beneficiaries



228



New organisations that have applied for funding

£271,000



Total amount of loans given out



71

Funds

5



Social loans drawn down

1,148



Applications processed

Key highlights from our 2017/18 financial year:

£500,000

received from the Big Lottery for our social lending programme

£1,000,000

Partnership with Colyer-Fergusson Charitable Trust to offer £1 million endowment match funding

£30,000,000

In January 2018 KCF reached a huge milestone, distributing £30 million in grants since 2001

£18,348,813

Endowment value at year end

Chosen as KCC Chairman's Charity of the Year

Core funding pilot launched

Welcome to Kent Community Foundation's 2017/18 Annual Review



“

Josephine McCartney
Chief Executive

2017/18 has been a fantastic year for the Foundation with the launch of our new £1m endowment match challenge with the Colyer-Fergusson Charitable Trust and our new partnership with the Big Lottery which has boosted our social lending pot by a further £500,000.

The team has also grown to fourteen members of staff which has allowed us to provide even more support to charitable organisations and groups across Kent and Medway and the success of our core funding pilot has enabled us to plan a longer term three year core funding strategy which will be launched in 2019.

Of course, the support we deliver to organisations across Kent and Medway would not be possible without the generous support of our fund-holders and donors and I would personally like to thank everyone who chooses to invest in local causes through Kent Community Foundation.

We are excited about the year ahead and continue to be ambitious in our plans to help empower organisations in our local communities to thrive and grow.

We hope you enjoy reading our annual review and seeing the impact we have made together throughout the year. ”



“

Tim Bull
Chairman of Trustees

These are challenging times for the many charities and community groups in Kent and Medway who play a huge role helping people in need and making our communities stronger.

Their struggle is always to sustain essential services and valuable projects in an environment of uncertain funding.

Kent Community Foundation is one funder which, with the help of our generous donors, offers a constant source of financial support to these organisations. Our challenge is to build our resources so that we can do more and sustain that support.

I am therefore delighted that Kent Community Foundation is able to report on some significant initiatives which will boost our ability to help our charitable and social enterprise sectors in the future.

As ever I am very grateful to the donors and strategic partners who make this possible, and to the tireless work of our excellent team of dedicated staff; the essential link between the 'donors' and the 'doers'. ”

About Kent Community Foundation (KCF)

Established in May 2001, KCF distributes grants to local grassroots charities and community groups across Kent and Medway. KCF provides a service to their donors who want to maximise their local charitable giving in the county, connecting them to causes and communities that mean the most to them.

In 17 years KCF have given out over £30 million in grants and established an Endowment Fund of over £18 million which will benefit Kent and Medway communities for years to come.



Our Vision

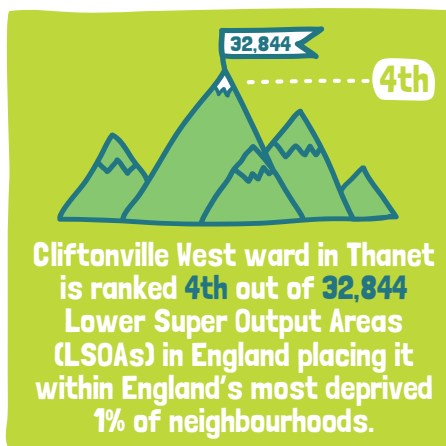
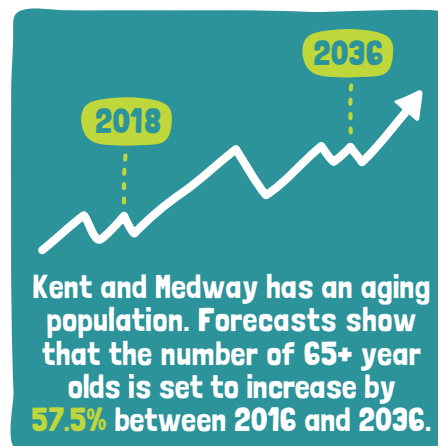
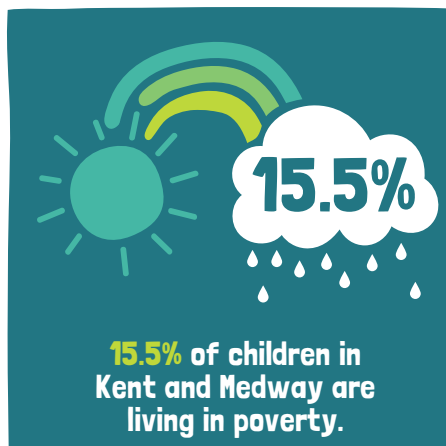
Our vision is to empower organisations and charities in our local communities of Kent and Medway who make a real and positive difference to people's lives.

Our Mission

Our mission is to proactively create strong local communities by connecting those who want to help with those seeking help.

Kent today

Kent is a wonderful place in which to live and work but it is also a county of extremes. Amongst the affluence of many areas there are pockets of significant deprivation in neighbouring communities. These communities are often hidden by statistical averages, making them harder to reach and more likely to remain in poverty.



I have always wanted to do boxing, and now I am doing it, which I am very grateful for. I have learnt new things and had the chance to forget my worries about my mum, who can be quite unwell sometimes. I have made some new friends at boxing too! Thank you so much.

Eni, Carer

Arts in Ramsgate, Ramsgate

We can only thank you for your support as it has made a major contribution to the sporting lives of 150+ local people. The sporting community of Dover has benefitted from the work we have been able to undertake which has been directly achievable because of this grant.

Dover Athletic Football Club Youth Section

Magic (UK) Limited, Medway



Grants awarded

Thanks to our fund-holders, donors and supporters the following was delivered through Kent Community Foundation in 2017/18.

★ **£2,261,769** ★
Total amount awarded

 **560** 
Total grants awarded

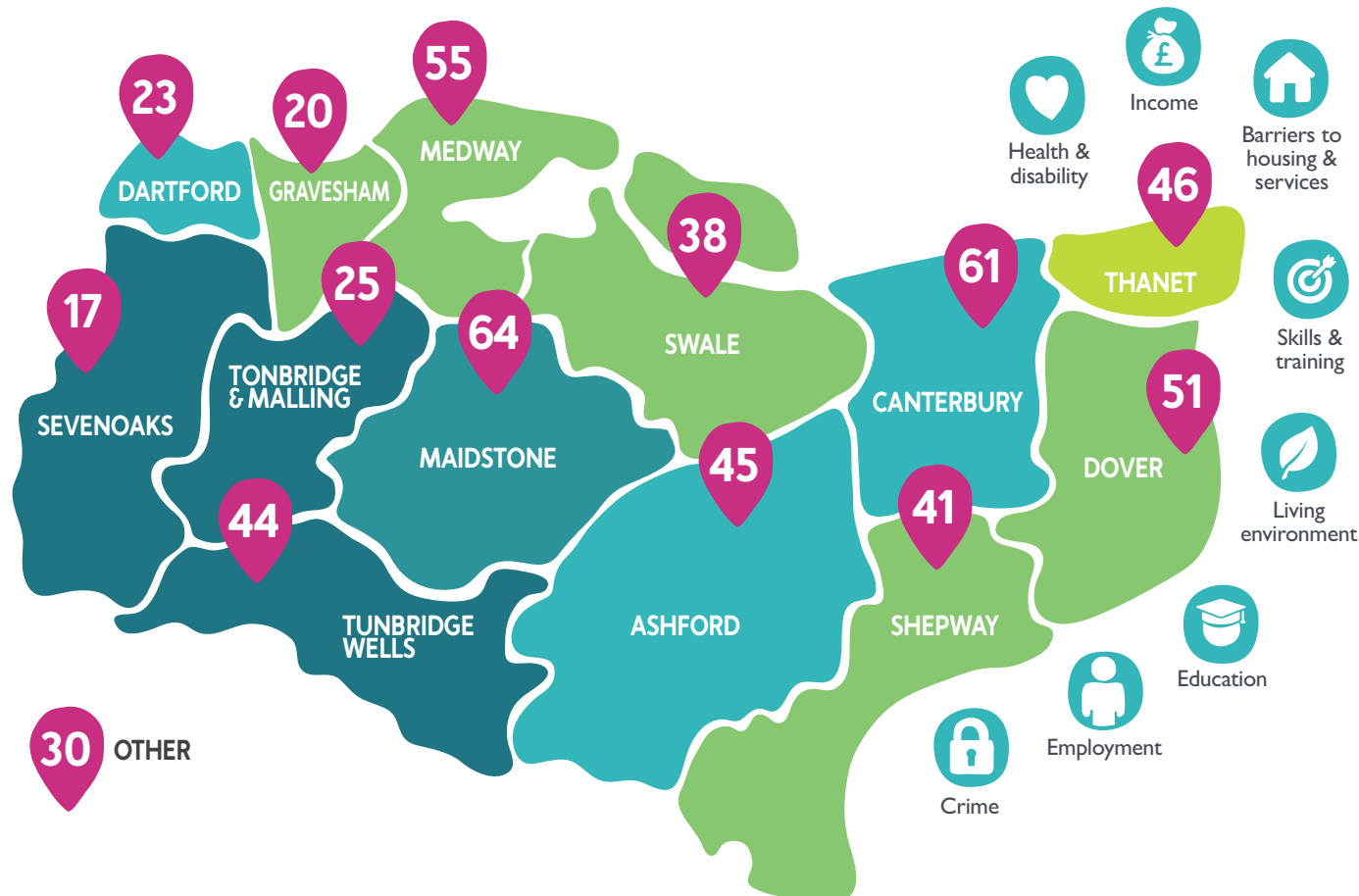
 **151,000** 
Total number of beneficiaries

 **99** 
Grants to individuals

 **1,148** 
Applications processed

 **461** 
Grants to organisations

Projects funded by district 2017 / 18



Index of Multiple Deprivation

This map of Kent and Medway shows how the districts rank nationally in terms of overall deprivation, based on the latest Index of Multiple Deprivation (IMD 2015). The rankings are compiled by averaging the indices, which are calculated across seven domains for very small community levels ('Lower Super Output Areas' or LSOAs, of about 1,500 people)*. The LSOA scores help identify the most disadvantaged areas within each district.

National Position

- Most deprived **20%** of authorities
- Between **21-40%** most deprived
- Between **41-60%** most deprived
- Between **61-80%** most deprived
- Least deprived **20%**

Our impact is significant

Since 2001 KCF has given out over £30 million in grants to community organisations and individuals across Kent and Medway. Each year we process over 1,000 applications and give out over £2 million. In 2017/18 we awarded 560 grants to 378 different organisations totalling £2.26 million. We focus our support on smaller, grassroots organisations that are dealing with a range of issues.

In
2017/2018

£385,058 was given to support people with disabilities and illness (17%)

£513,350 in grants supported education and training projects (27%)

Grants made to mental health projects are estimated to reach over 8,000 young people

We try hard to respond to local need

We regularly review the social needs across Kent and Medway, and re-focus our grant-making accordingly. We look at local authority population data, policy changes that are coming down the line, funding strategies of other grant-makers and try to anticipate where the next big need is coming from.

Mental Health Provision

KCF is able to respond nimbly to changes in the funding landscape, to ensure that good organisations making positive changes remain viable.

In the autumn of 2015, Kent County Council consolidated its historic funding to about 35/40 mental health organisations across the county via a tendering process. KCF worked hard ahead of this change to connect with mental health organisations and make them aware of the funding that we offer. As a result, applications from specialist mental health organisations to KCF greatly increased – from six grants in 2014 up to 30 grants in 2017.

Projects improving children and young people's mental health

In the last 25 years, rates of depression and anxiety amongst young people have increased by 70%. 50% of mental illness in adult life (excluding dementia) starts before 15, and 75% before 18. The need for effective early interventions in the lives of these children and young people who are struggling with mental ill-health is one of the most pressing social needs in Kent and Medway today. The voluntary sector is well-placed to meet this need with bespoke, friendly, accessible services, and KCF has responded to this by channelling funding into this area.

In 2017/18, we made over 100 grants to organisations working to improve children's mental health and wellbeing, ranging from bereavement support to children who have recently lost a loved one in Maidstone and Mid Kent to a cookery-based intervention for young adults with low confidence and self-esteem in East Kent.

£5,000
Maidstone

Mental Health Case Study

Dandelion Time

Dandelion Time supports children experiencing serious emotional and behavioural difficulties, resulting from trauma, physical, emotional or sexual abuse, neglect or domestic violence. It delivers individually tailored programmes of practically-based therapeutic sessions, combining farm and natural craft activities with one-to-one emotional support. Children attend one day per week with a carer for 10-15 weeks, engaging in family and small group sessions at their centre and farm.

Dandelion Time's programme has supported 85 children over the last year. The programme had a really positive impact on the psychological wellbeing, self-esteem, confidence and resilience of the children, helping them to cope better with life's challenges and recover from setbacks.



The normal therapies I'd been to were just sitting in an office and talking. I actually thought it made me worse because they just kept mentioning it. They were pushing me too hard. When I first turned up I saw the guinea pigs and thought 'yes' this is my place, this is my home. Stroking the donkeys made me feel calm. Being at Dandelion Time gave me something to think about when I was nervous, it gave me something to put my mind in to rather than thinking about the worries. I didn't even know I had fears any more. The best 10 weeks of my life was here.

Jasmine, aged 10

Themed Programmes

Kent has some of the most affluent areas in the country, but this can hide the very real need right on our own doorstep. Kent Community Foundation is driven by this need and has established our Themed Programmes in order to enable our funders to adopt a more strategic approach to some of the most pressing social challenges facing our communities.

In
2017/2018

we gave
£823,412
through Themed Programmes

to
179
projects

helping
56,471
beneficiaries

The main aims of our Themed Programmes are:

- Addressing the most pressing needs of the county
- Maximising impact of our grant-making
- Increasing numbers of applications and awards
- Enabling more powerful impact measurement
- Providing opportunities for more engagement with donors
- Providing an enhanced offer to applicants
- Better management of the increasing number of funds

Children, Young People & Families

This programme funds local projects that are making a real difference to the lives of disadvantaged children and young people in Kent and Medway.

Elderly & Isolated

This theme supports local projects that address the challenges faced by elderly adults and support people to stay well, healthy, independent and most importantly, combat social isolation.

Vulnerable Adults

The Vulnerable Adults programme supports a wide range of local projects that help vulnerable adults stay well and independent, with a focus on early intervention projects working to achieve positive social outcomes, tackling disadvantage, deprivation and social exclusion.

Employability, Skills & Enterprise

The aim of this theme is to raise the aspirations and increase the skills and opportunities of people who are far from the labour market due to a range of challenging circumstances that can present barriers to employment.

Themed Programme grants awarded:

£384,547
Children, Young
People & Families

£192,554
Elderly & Isolated

£163,186
Vulnerable Adults

£83,125
Employability,
Skills & Enterprise

Children, Young People & Families

Our Children, Young People & Families theme focuses on projects supporting young people who are disadvantaged. Some of the issues faced might include: living in poverty or deprivation, abuse or neglect, disability, being a young carer, living in care, bereavement, mental health issues, disability, low aspiration or poor achievement.

*Per application

79
Projects

£384,547
Awarded

27,535
Beneficiaries

£4,867
Average grant size*

From early intervention work, such as parent workshops and parent-toddler cooking classes, to youth clubs and mentoring programmes for young people at risk; we support a broad spectrum of projects that ensure young people and their families can access activities and support from which they might otherwise be excluded.

64,418 children (0–19 years) in Kent have a long-standing illness or disability.

(source: ONS 2011, Kent PH, produced by RC, May 2016)

More than a quarter of the children living in low income families in Kent live in two districts: Thanet (22.6% 6,825 children) and Swale (20.3% 6,480 children).



15.5% of children (49,565 children) in Kent are living in poverty, higher than the average for the South East region (12.3%).

Almost two thirds (65.1%) of the children in low income households in Kent are aged 10 & under.

We would like to thank the Gatwick Foundation Fund and Kent Community Foundation for supporting Valence School with this project. Not only have we been able to have a positive impact on the lives of our students here we have also been able to reach out to those in mainstream education and provide them with activity and opportunity which they had not previously been aware of and given them details of further opportunities to continue provision.

Friends of Valence School



Case Study

Friends of Valence School

A young female student at Valence School previously tried powerchair football in her own chair with an attachment but found that her chair was too slow to take part with her friends who were using specialised chairs. Subsequently she stopped playing. Upon receiving funding, Friends of Valence School were able to provide her with a football-specific chair, meaning she could play at the same level as her peers. She enjoyed football so much that she now plays for the local powerchair football club. During the project she began to play competitive powerchair football at a regional league level and scored a hat-trick at her debut game! She has also made new friends with her team mates and has enjoyed socialising away from football with them.



Elderly & Isolated

There are considerable challenges associated with an ageing population including loneliness, isolation and illness. Our Elderly & Isolated theme supports projects that give elderly adults the opportunity to have regular social interaction, such as social activities, 'men's shed' projects or lunch clubs.

*Per application

47	£192,554	10,676	£4,096
Projects	Awarded	Beneficiaries	Average grant size*

This theme provides practical support to older people living alone, such as one-to-one befriending schemes or transport services enabling them to get out and about. We fund intergenerational activities; enable older people to use their skills and experience to make a contribution to their communities; and offer activities that encourage participation in sport and physical activity and opportunities for cultural outings such as choirs or museums.

26,616 people aged over 65 in Kent & Medway are living with Dementia (source: KCC & Medway Community Healthcare NHS).

11% of older people are in contact with family, friends and neighbours less than once a month.

Approximately 10% aged over 65 say they feel lonely all or most of the time.

Kent Community Foundation have been a pleasure to work with and have offered invaluable support from the onset. While waiting for decisions to be made on funding, I was updated on a regular basis and when notification came through it was clear and precise. I appreciated that James Horne took the time to visit one of the Memory Lane Café sessions and his interaction / positive feedback was very motivational.

Memory Lane Café

29,477 Kent residents aged over 65 live alone.



Case Study

Compaid Trust

Helen has been using Compaid's transport service since the spring of 2017. A wheelchair user for many years, Helen relied on her husband to get around, but when he passed away in 2016, she immediately became more isolated. Taxis proved to be inaccessible and very unreliable, and Helen lost confidence in making any journeys alone, becoming totally housebound and falling into depression. When a neighbour mentioned Compaid's local Kent Karrier service in January 2017, Helen's prospects brightened. She now uses the service several times a week to go to social events and church services in the local area and has made many new friends at the events she attends. Helen's regular driver is extremely reliable and friendly and, as a result, Helen's confidence has been restored in utilising transport to get out and about.

£6,000
Maidstone

Square Pegs Drama Club

Square Pegs Arts runs drama and arts based activities for children and young people who have learning disabilities, autism, social communication difficulties or who struggle to 'fit in' with mainstream activities. They run regular drama groups, a singing group, theatre trips and various other creative projects in Kent and Medway.

This grant went towards the development, writing, composing, design, workshops, rehearsals and performance of an original theatre production working with 30 young people in the Maidstone area, with the goal of putting on a show at The Brook Theatre in Chatham.

The young people involved not only worked on their skills within the theatre but for many it was a place to work on their communication skills and build their self-esteem in a safe environment with their peers.

One young person with learning difficulties and extreme anxiety (who has been involved with the group for five years) took part in this project. He has never performed on stage before due to his low confidence, but through nurturing and supporting him, and writing a role especially designed for his needs, in this project he confidently performed on the stage in front of an audience of 200 for the first ever time.

This was a significant breakthrough and his family are overwhelmed with the difference in him through his involvement with Square Pegs.

This funding has helped us make a real difference to these young people's lives, and we really appreciate the investment in what was a really successful project.

Beth James Square Pegs Drama Club



Spadework Ltd.

Spadework supports vulnerable adults to develop their independence and personal skills, help them reach their full potential and live with confidence and dignity in the wider community through working in a caring commercial environment.

Their trainees are aged between 18 and 65 years old with physical and/or learning disabilities, including autism, hearing or sight loss, cerebral palsy, mental health problems and acquired head injuries. Their trainees are involved in all aspects of Spadework, including gardening on and off site, working in the farm shop, serving customers in the café, making cakes, craft and woodwork.

The grant allowed them to expand their vegetable garden and pumpkin patch to increase the supply of winter greens to their restaurant trade which has increased their turnover by 20%. The pumpkin garden has enabled the trainees to see a whole season of change and growth, from

seeding and planting to watering, harvesting and preparing. Spadework hopes to increase their revenue from the pumpkin patch by a further £1,000 per year.

Each week 50 trainees work in the vegetable garden and are involved in harvesting and preparation. Last year, the trainees grew an amazing 20,000 plants from seed.

J joined Spadework in July 2012 for three days a week and over time he has increased his hours to five days. His health issues include autism, finding it hard to work outside strict parameters with any change very difficult. But he is capable of very fine detailed work. J has very good fine motor skills and mathematical skills, which he has been able to practice, writing plant labels, signs within the garden centre, painting birds and decorations that are made in woodwork. J has practiced many life skills while at Spadework that have helped him to develop his confidence, manage change and be able to speak up for himself.

Tracey Thompson,
Fundraiser, Spadework Ltd.

The expansion has been an enormous success. With the help of Kent Community Foundation and thanks to the hard work of our staff, volunteers and our wonderful trainees, we've just been awarded the Kent Life - Community Garden of the Year in 2018.



£4,640

Tonbridge and Malling

Case Study / Vulnerable Adults

£3,500
Ramsgate

Thanet Community Development Trust

Thanet Community Development Trust has been helping the residents of Thanet since 2002. The funding was needed to run their social inclusion programme, 'Get Connect' (or 'Craft Club' as the members have re-named it). The group is available to anybody who feels lonely, isolated, or in need of social interaction.

During their three hour, weekly sessions the members take part in art and crafts activities such as, mosaics, book folding, stained glass painting, flower arranging, painting, making Christmas decorations, candle making, soap making and knitting and sewing.

The sessions help members find new friends and increase their confidence; something many members had lost after years of having nobody to talk to. Some of those attending have started walking in together, meeting up outside the group, attending new groups elsewhere, and referring people they meet to the 'Craft Club', saying how much it helped them to come out of their shell.

One of their members had been caring for her 78-year-old husband after a heart attack and using the 'Craft Club' as her respite. She suddenly lost her husband and confined herself to her house, not wanting to come out and face the world. She was visited by her friends from 'Craft Club' and after two months, she decided it was time to come out of her house and start doing things again. The first place she came to was 'Craft Club', where she was welcomed back with cheers and hugs and lots of noise which could be heard from the floor above!

She loves her time at the club and credits it for helping her regain her confidence as she adapts to living alone. She was also able to find out about other courses and signed up to relearn how to cook, as she had been living on sandwiches since her husband had died. Since then she has become more confident, going to new groups and making lots of friends, and she is finding coping with the loss of her husband to be much easier with like-minded people around her.



Kent Enterprise Trust

Kent Enterprise Trust is an established charity and disability-confident employer which helps people into or back into employment, education or training, working in partnership with many other local organisations with an excellent record in helping people to develop and grow.

The grant was needed to provide equipment and training to support 12 unemployed people to overcome their individual barriers to employment or starting their own business. The aim of the project was to help people improve their employability through practical skills at the community garden and learning employability skills. Also, to improve their health and wellbeing with fresh air, exercise and healthy eating from the produce they grow and the one to one support, coaching, mentoring and training.

This grant has made a huge difference to 12 people offering them an opportunity to get out of the house and have a purpose.

Every day the participants learned new skills and integrated with others, lifting their spirits and sense of achievement.

Greg was unemployed for about six months with previous experience in animal management and wildlife. Greg was a huge benefit to the gardening team, working really hard on the new butterfly bed, helping at the NGS Open Day and raising over £1000 for charity. Greg goes the extra mile to help out, and gets stuck in with anything he is asked to do. He is currently applying for work and will get a great reference from the Trust.

Quintan was unemployed for just over a year. He helped with the collaboration of training feedback and was a great help in supporting others in the group with their IT skills. He has since joined the Trust team as a volunteer training admin and fundraiser.

£3,000

Herne Bay & Canterbury

Quintan,
Kent Enterprise
Trust Trainee

A friendly group letting me spread my wings, sharing skills and knowledge. Fun and relaxed.



Vulnerable Adults

Someone may not appear visibly vulnerable, but there are many people in our communities who need extra support or protection, such as people with a learning difficulty, physical disability, living with a mental health issue, victims of abuse, care leavers, refugees and asylum seekers, ex-offenders and carers.

*Per application

37
Projects

£163,185
Awarded

16,970
Beneficiaries

£4,410
Average grant size*

The Vulnerable Adults theme exists to support projects that are working to look after and promote the safety, well-being and independence of vulnerable adults. We support projects that give vulnerable people the opportunity to socialise with others; combatting isolation and social barriers. Through this theme we provide life skills and work experience for adults with learning difficulties, physical disabilities, or mental health issues. The theme protects victims of abuse and integrates marginalised groups in to the wider community. It supports carers who look after family members or loved ones at home, including offering respite or social activities for carers.

144,558 people
in Kent have a
mental illness.

(source: NEPHO, ONS)



In December
2017 England
had an estimated
homelessness rate
of 0.58 households
in priority need
per 1,000.

65% of prisoners
have a numeric
skill at or below the
level of an 11 year
old and 48% have
reading skills at
or below this level.

In Kent five local
authorities were
above the national
average - Canterbury,
Maidstone, Shepway,
Swale & Thanet.

Four districts
in Kent are above
the Kent average
(2.6%) for Personal
Independent
Payments (Disability
Living Allowance).

These are:
Dover 3.1%
Shepway 3.4%
Swale 3.3%
Thanet 3.8%

Medway Foodbank, Medway



Case Study

Ashford and Tenterden Umbrella

Dave, aged 65 years was first introduced to Ashford and Tenterden Umbrella by the local mental health crisis team. He was suffering from depression and anxiety with suicidal ideation. The breakdown of his marriage and loss of employment through physical ill health had impacted greatly on his mental wellbeing. With help and support from staff, volunteers and service users Dave started to work towards recovery of his physical and mental health. Through social and physical activity such as joining the walking group, table tennis, snooker, board games and becoming a volunteer, Dave has progressed and sought other paid work. He has recently been taken on as a sessional worker for Ashford and Tenterden Umbrella.

Dave,
Umbrella member

Umbrella has helped me
to believe in myself again!



Employability, Skills & Enterprise

The aim of the Employability, Skills & Enterprise theme is to make a real difference to the lives of people who are far from the labour market. The theme supports projects working with young people/Not in Education Employment or Training (NEETs), young parents, ex-offenders, ex-forces, those with financial barriers and those with learning disabilities, mental health issues or physical disabilities.

*Per application

16 Projects	£83,124 Awarded	1,290 Beneficiaries	£5,195 Average grant size*
-----------------------	---------------------------	-------------------------------	--------------------------------------

We look for projects that provide accredited training, apprenticeships, meaningful work experience and life skills/employment skills workshops for the disadvantaged. The theme supports strategic projects which aim to prevent young people from becoming NEET.

Five districts are above the Kent average of 1.9% for unemployment:

Dover 3.3%
Gravesham 2.1%,
Shepway 2.3%
Swale 2.8%
Thanet 4.9%.

Seven districts are above the Kent average for youth unemployment of 3%, and three are significantly above it:

Dover 5.5%
Swale 5.4%
Thanet 7.3%.



Approximately 18,505 people in Kent (2%) are claiming unemployment benefits.

This is higher than the South East region (1.4%).

7% of Kent's population aged 16 to 64 have no qualifications.

Higher than the South East average (5.4%).

Spadework Ltd. West Malling



Motorcross Challenge Project (MXCP), Dover



The service at MooreSkills has been brilliant! The staff have made me feel welcome and are always friendly and very helpful.

Ken, Labourer
Medway Hospital

Case Study

TillSkills LTD | MooreSkills Training Centre

Unemployed local resident Ken came to MooreSkills after the contract at his place of employment came to an end. Ken was told by his job centre advisor that he had to apply for four to six jobs each day. This required him to come to MooreSkills everyday it was open. Ken was always very keen to get back into work and willing to work a number of different occupations. Over four to five weeks, Ken was assisted with his job search by volunteers and applied for four jobs, the following day one of the companies got in touch and offered him the job to start the following Monday.



Kent Social Enterprise Loan Fund

In 2017/18

5 Organisations received loans

£271,000 Total given out

Since 2012

36 Organisations received loans

£1,510,000 Total given out

Social investment is a growing market in providing repayable finance to organisations who are looking to enter into a contract, take part in a trading activity or purchase a particular asset which will be of benefit to them and their clients.

The Kent Social Enterprise Loan Fund provides loan financing to support existing and newly created social enterprises that benefit the local community and enhance the economic, social and environmental vibrancy of Kent. Primarily a loan fund, there is also some scope for an element of grant funding.

The aim of the Fund is to spread the culture of social enterprise and break down the barriers that prevent enterprising social businesses from accessing finance. Once finance is repaid, it will be re-loaned and reinvested back in the community.

The scheme was originally set up in 2012 with £3m funding from Kent County Council. During that time Kent Community Foundation has made offers in excess of £2.7m. In 2018 Kent Social Enterprise Loan Fund (KSELF) benefitted from a fantastic boost thanks to funding by the Big Lottery Fund and Big Society Capital. This support means we can now offer a higher level of grant element (up to 30%), as part of the KSELF scheme.

The loan scheme offers:

- Loans of between £10,000 and £100,000
- The potential of a grant of up to 30%
- Loan term of between 1 and 5 years
- Unsecured facility
- Support with initial and ongoing financial planning
- Flexible and tailored packages
- Fixed rates and terms
- Funds reinvested in the sector

Bemix CIC, Swale



Internships with intensive support for interns and employers have proved a powerful new way for Kent's young people with learning disabilities and autism to achieve paid work. Now in our third year with 22 young people, piloting this approach placed huge strain on our workforce and funds. The Kent Social Enterprise Loan was a game changer for us, funding the administration, systems, skills and team needed to reach many more young people. Thinking of the six who were overjoyed to get jobs last year, we simply could not have done it without the loan.

Matt Clifton, Chief Executive, Bemix CIC

James took great care to understand our methods, cash flow, and the challenges of education funding. His affirmation and rigour, and a kind visit from the loan panel Chair, made us feel genuinely backed during stressful times. KCF went further, connecting us with employers, influencers, and other funding. Our deepest thanks go to James and all at KCF for making our future growth and impact possible.

Case Study

Bemix

£10,000
Grant

£70,000
Loan

Bemix support people with learning difficulties to speak up, make choices and become powerful and influential. They support them to gain opportunities and become more independent in learning, housing, work, health, money, travel, leisure and relationships.

The loan was to help Bemix run their Supported Internship programme to offer a year long unpaid work placement for 16-24 year olds with a learning disability and/or autism with the aim of continuing in paid work at the end. The programme is an alternative to mainstream college and designed for young people who want to go into employment, but need specialised support to do so.

Each participant works four days per week with one day tuition in Maths, English and IT skills. They are assigned a work coach who supports them to do the job as effectively as anyone else could do it.

Giving your way

At Kent Community Foundation, we offer a tailored service to individuals who want to invest in their local community whether you are private individuals and families, companies or Trusts and Foundations.

Whatever your starting point and for any amount that you wish to give, KCF ensures that your giving has a big impact where it is needed most. We use our insight and network of contacts to connect donors with fantastic local causes. With our extensive local knowledge, we can often find wonderful grassroots projects operating below the radar; where a modest sum of money can make a huge difference.

Bright Shadow CIO, Thanet



Your giving options

There are many ways to give through Kent Community Foundation:

1. Establish your own fund:
 - **Immediate Impact Flow-through Fund:** a fund for today
 - **Endowment Fund:** an invested fund that provides a lasting legacy
 - **Hybrid Fund:** a fund that makes an impact today while also investing for the future
2. Donate to our Themed Programmes
3. Leave a gift in your will

A fund can be set up tax effectively with a gift of cash or shares.

Immediate Impact Flow-through Fund	 GIVE	 GRANT	IMPACT NOW	
Endowment Fund	 GIVE	 GROW	 GRANT	IMPACT FOREVER
Hybrid Fund	 GIVE	   	 GRANT	IMPACT NOW & FOREVER

The Brook Trust operates nationally, but also has a local Fund with Kent Community Foundation. We believe in the power of grassroots community action, but if you want to reach a lot of small organisations, you need knowledge, you need networks, you need people on the ground... Essentially, KCF acts as a staff for us.

Rosalind Riley,
Co-Founder and Trustee of
The Brook Trust Fund for Kent

Louie's Helping Hands, Thanet



Why work with Kent Community Foundation?

We make giving easy and fun! We know where your charitable giving can make the biggest impact thanks to our research into the needs of the county and our relationship with charities and community groups. We review, monitor and evaluate diligently on your behalf so you can have full confidence in our grant-making.

Setting up a named fund

A donor-advised Fund with Kent Community Foundation (KCF) offers an individual, family or business all the advantages of creating their own named charitable fund, but without the administrative burdens and obligations associated with setting up and managing a charitable trust.

Fund-holders can be involved as little or as much as they wish in the grant-making process. KCF agrees with the donor the purpose and priorities of their fund from the outset (e.g. creating opportunities for young people) and typically, prepares a short-list of projects from which the fund-holder advises grants they wish to be made. Many fund-holders choose to involve members of their family in grant-making decisions and an important benefit of a named fund with KCF is that it can be passed on to the next generation.

As a Flow-through Fund

Minimum donation of £25,000

If a long term commitment is unsuitable, then a fund-holder can put their money to work straightaway through a Flow-through Fund which is distributed in full over a set period of time. This can be set up as a one-off fund or as an on-going fund that is topped up regularly, usually annually.

As an Endowment Fund

Minimum donation of £100,000

For philanthropists who want to provide a lasting legacy for their local community and perhaps pass the heritage of giving on to the next generation of their own family, then endowed funds are extremely powerful. An endowed fund is invested to produce an annual income which is distributed as grants each year.

Benefits of setting up a named fund through Kent Community Foundation

- 1** Establish your own charitable trust without the legal and administrative burden
- 2** We work with small charities where a modest sum of money can make a significant difference – we can access these small grassroots organisations that might otherwise be unknown
- 3** It is an easy, convenient and tax-effective way of giving
- 4** KCF offers opportunities to work with other funders and give collaboratively. You can also remain entirely anonymous if you wish
- 5** With 17 years of grant-making experience and excellent local networks, you can trust KCF to handle the entire grant-making process, managing applications, due diligence and impact measurement

The Alkham Valley Community Project and Therapeutic Riding Centre, Dover



BME Association, Ashford



Endowment Funds

Endowment Funds provide a lasting legacy for your local community. With an Endowment Fund, your gift is invested, with the revenue it generates each year going to support your chosen causes. Over time, the amount distributed will outstrip your original gift and being able to pass the heritage of an Endowment Fund on to future generations is extremely powerful.

Kent Community Foundation currently manages over 40 Endowment Funds equating to a value of £18.3 million.

How do Endowment Funds work?

An Endowed Fund distributes approximately 5% of fund value annually to cover both grant-making in the community and the contribution to KCF's own running costs, while maintaining the long-term value of the Foundation's Endowment Funds.

The minimum donation required to set up a named Endowment Fund with KCF is £100,000.

To be eligible for our current match-funding programme with Colyer-Fergusson Charitable Trust, new donors must be committed to setting up a named Endowment Fund, starting at £50,000 and current donors will need to top-up by £25,000 in order to qualify for the match.

Illustration of how the match-funding works:

Donation	£100,000	+
Match-funding	£100,000	+
Gift aid reclaimed	£25,000	+
Less KCF set-up contribution	£2,500	-
New Endowment Fund	£222,500	=

Benefits

Perpetuity:

With an Endowment Fund your gift is invested to set up the fund, with the revenue it generates every year going to support your chosen causes. Over time, the amount distributed will outstrip your original gift, making a lasting legacy for your community.

Pooled investment:

Your endowment will be pooled with other funds held with us allowing for a broader spectrum of investments, protection of capital and increased returns.

Ease:

We will deal with all of the administration and legal burdens of managing a charitable fund whilst still enabling you to choose the objectives of your fund and have a say in where the money goes.

Trustworthy:

You can be safe in the knowledge that KCF will manage the entire grant-making process, managing applications, due diligence and impact measurement.

Impact:

By investing your donation, the benefit to the recipients is magnified beyond what a donor might have been able to give during his or her life.

Strategic giving:

Giving through KCF helps your gift move from reactive cheque writing to more strategic philanthropy. We can help guide your giving choices and maximise your philanthropic impact.

Kent Woodland Employment Scheme, Maidstone



Corporate giving

Many companies across Kent and Medway are choosing to give through Kent Community Foundation to invest in and support their local communities. No matter what size of company you are or how much you wish to donate, you have the opportunity to make a real difference.

Key ways to support Kent Community Foundation:

- 1 Set up a named fund** where, for a minimum annual donation of £25,000 or more, companies get to set their own criteria for the fund and make decisions about where the money goes.
- 2 Make a donation to the Themed Programmes**, ensuring that any money donated is going to where the need is greatest in our county.
- 3 Donate your skills and experience.** We work hard to support the charitable sector and by creating a directory of pro-bono support, we can connect you with organisations that could utilise your skills.
- 4 As a Professional Advisor**, if you have clients looking for an alternative to setting up their own Trust or Foundation then a fund with Kent Community Foundation is an ideal way to support local grassroots projects as we can take away all of the administrative burden that goes into managing a Trust or Foundation.

It is really important to people to feel confident in their giving and that is why we offer companies and employees a say in where the money goes. We also provide impact reports so donors can really see the difference their donation has made to the people who need it the most.

Port of Dover Community Fund



Donations from smaller companies and SMEs

Corporate giving is not only aimed at large multinational companies. We welcome corporate giving of any size or amount. For a donation of £1,000 or more per year, we can pool your giving with other like-minded organisations and put the money towards our Themed Programmes. You can leave us to make the decisions on where the money goes whilst ensuring that the money will be given to some wonderful local projects within the following areas:

- Children, Young People & Families
- Elderly & Isolated
- Vulnerable Adults
- Employability, Skills & Enterprise

The main aims of our Themed Programmes are to:

- **MAXIMISE** impact of our grant-making
- **INCREASE** numbers of applications and awards
- **ENABLE** a more powerful impact measurement
- **ENSURE** donations are allocated to those with the greatest needs

If you are a Medway-based company, you may also wish to donate to our **Medway Corporate Giving Fund**, bringing together Medway businesses, entrepreneurs and individuals committed to supporting their local community.

This fund has a collective and proactive approach that is so powerful in bringing about tangible changes in the community and maximising the potential impact of each member's contribution.

I am so proud that the Port of Dover continues to provide benefit to our local community through the support of these exceptional projects. I would like to thank the Kent Community Foundation for administering the Port of Dover Community Fund on behalf of the Port and all of this year's recipients for their unfaltering hard work and dedication.

Port of Dover, Chief Executive

The Gatwick Foundation Fund

The Gatwick Foundation Fund has been set up in partnership with Kent, Surrey and Sussex Community Foundations. The Fund oversees £300,000 worth of annual grants for worthy causes across the region. The funding is used to promote employment, training and skills, alongside support for families, the elderly and young people at a local level across the three counties.

“Gatwick has a proud history of charitable support and as the airport continues to grow and thrive, we want to see our local community grow and thrive too. We are proud of the positive impact our grants have on the organisations and people we support.

The Foundation Fund is an important part of our wider community engagement programme and we know it can make a real difference to people's lives. We are committed to ensuring these important community projects continue to thrive and we are very grateful to the support of Kent Community Foundation in making this happen.”

Melanie Wrightson, Community Engagement Manager, Gatwick Airport

Other ways to give

Kent Community Foundation welcomes donations from anyone wishing to support local causes. No matter how big or small your donation may be, we can help you to make a real difference.

Medway Plus, Pheonix Garden, Medway

General Donation

A donation of any amount can be made to us via our website where it will be

pooled with other donations and put towards our Themed Programmes.

Our Themed Programmes are open all year round and individuals can donate as much or as little to the following areas: Children, Young People & Families, Elderly & Isolated, Employability, Skills & Enterprise and Vulnerable Adults.

Shares

Gifts of shares benefit from tax relief in two ways:

1. You can claim Income Tax relief on the value of the shares
2. They are exempt from Capital Gains Tax i.e. you will not be taxed on any gain you have made on the value of your shares

The donation of shares is administered through a transfer of ownership and then sold to realise the value. KCF manages this through one of our investment houses who will handle the transfer and deal with the transfer of letters. A gift of shares is also eligible for match-funding opportunities.

All shares that are transferrable can be donated to a charity, but only publicly quoted shares qualify for tax relief. Publicly quoted shares include shares listed on the London Stock Exchange or Alternative Investment Market Shares (AIM). For a full list of qualifying stock exchanges, please visit the HMRC website.

Sale of land or property

We can work with Professional Advisors, Wealth Managers or Property Managers to arrange the transfer of land or property to Kent Community Foundation.

Leaving a gift in your will

By supporting Kent Community Foundation in your will, we provide a flexible range of options for people interested in leaving a permanent legacy.

Donations are typically invested as an Endowment Fund and the income distributed each year as grants, meaning that the gift provides long-lasting benefit for generations to come.

There is also the option to create a Flow-through Fund where donations are not invested but are spent down for immediate impact in our communities.

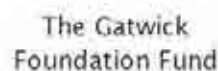
For those who do not want to establish an endowment fund, there is also the option to create a Flow-through Fund. Donations are not invested but are spent down for immediate impact in our Kent and Medway communities, usually over a defined period of time, which we agree in advance.

Our board of trustees is legally responsible for ensuring that donations are used for charitable purposes in line with restrictions agreed with you as the donor. Your 'Letter of Wishes' is a practical vehicle to agree in advance with KCF your wishes and any restrictions relating to your charitable legacy gift. Your gift, once received by KCF, does become the property of the charity and KCF has ultimate discretion over grant-making in line with the restrictions agreed with you as donor. In order to ensure that the original spirit of the gift is kept alive, KCF trustees retain the flexibility to respond to changing community needs if, over the years, restrictions become irrelevant or obsolete.

All legacy gifts to a registered charity are exempt from inheritance tax (IHT) and Capital Gains Tax and could reduce the total amount of tax paid on your estate. If you leave 10% or more of your estate to charity, any remainder over the IHT threshold will be taxed at the reduced rate of 36% rather than 40%. For example, leaving a legacy of £100,000 actually only 'costs' £24,000. We recommend discussing this with your Professional Advisor.



Funds we manage



Our people

Kent Community Foundation Team

Danielle Nash – Grants Administrator
Rachèle Verrier – Funds Manager
Cassandra Reilly – Grants Administrator
Josephine McCartney – Chief Executive
Bruce Topham – Funds Manager
Liz Tredget – Office Manager
Amy Nash – Development Manager
Melanie Venning – Bookkeeper
Sophie Hosking – Development Manager
Hannah Lawrence – Communications Executive
Joanne Brown – Grants Officer
Sarah Osborne – Company Secretary
James Horne – Investment Funds Manager
Natalie Smith – Director of Grants & Impact

at our community volunteering day at Wildwood Trust



Patron

Viscount De L'Isle MBE
The Lord-Lieutenant of Kent

Vice Presidents

The Rt. Revd. James Langstaff
Bishop of Rochester

Simon macLachlan
MBE DL

Lady Anne-Marie Nelson
CBE DL

The Trustees

Tim Bull – Chairman of Trustees
Ann A. West, MBE JP DL
Blair Gulland
Emilia Falcetti Boscawen
Georgie Warner, DL
Hugo Fenwick
Melissa Murdoch
Peter Williams, MBE
Robert Sackville-West, DL
Sarah Hohler

We are very grateful for all the support we have been getting from Kent Community Foundation since 2004 without which some of our projects would not have been possible.

We, the trustees, service users and volunteers want to use this opportunity to say a BIG thank you and we look forward to your continued support.

Health Action Charity
Organisation MBE



2017 / 2018 financial year

Key financial information

	March 2016	March 2017	March 2018
Total donations:	£2,701,636	£6,583,196	£2,474,038

	March 2016	March 2017	March 2018
Endowment Fund:	£10,932,975	£17,673,348	£18,348,813

	2015 / 16	2016 / 17	2017 / 18
Endowment donations including gift aid:	£209,817	£5,181,487	£860,479
Flow-through donations including gift aid:	£2,491,819	£1,401,709	£1,613,559
Total donations:	£2,701,636	£6,583,196	£2,474,038

The total cost of running the organisation in 2017/18 was **£525,349**

This expenditure includes all costs associated with running the office including salaries and pensions.

Total reserves at 31st March 2018 were **£356,882** which is eight months' operating costs.

Value of grants from Flow-through donations was:	£1,552,280
--	-------------------

Value of grants from Endowment donations was:	£709,489
---	-----------------

Total grants:	£2,261,769
----------------------	-------------------

Total number of grants to organisations and individuals was:	560
---	------------

Quality Accreditation

Quality Accreditation is a Charity Commission for England and Wales programme which endorses and encourages best practice by Community Foundations. This endorsement and recognition has been held by Kent Community Foundation since 2007. Achieving Quality Accreditation demonstrates that a Community Foundation is serious about quality and accountability. It specifies what we do and how we do it in a way that other quality systems cannot, and enables Community Foundations to position themselves as part of a high-performing network across the UK.

Visit our website to read more about Quality Accreditation.



Registered with
**FUNDRAISING
REGULATOR**



**UK COMMUNITY
FOUNDATIONS**
GIVING FOR LOCAL GOOD

Charity Commission endorsed QA4

Going forward 2018/19

KCF's mission is to proactively create strong, local communities by connecting those who want to help with those seeking help. The strategy moving forward will be to encourage new philanthropy from a broader supporter base whilst continuing to build our core endowment funds in order to ensure the long term sustainability and financial health of the Foundation. This will allow us continue to make a significant difference for local communities, in particular the most disadvantaged, vulnerable and socially excluded across Kent and Medway.

The key areas in Kent Community Foundation's strategy are:

- 1** To grow our designated and unrestricted funds to allow the Foundation to direct funding to where it is most needed across the county.
- 2** To develop and maintain effective grant and loan making operations, including the creation of a new multi-year funding programme to address some of the most pressing issues for local voluntary sector organisations in Kent and Medway.
- 3** To develop a robust impact model which will clearly demonstrate over time the difference the Foundation and our supporters have made to the most disadvantaged people of Kent and Medway.
- 4** To create a sustainable model of support for the voluntary sector by establishing strategic partnerships with intermediaries and other key stakeholders across the county.
- 5** To build our organisational capacity and resources, including sustainable core funding, to meet our objectives.
- 6** Following the success of our core funding pilot we will be launching a multi-year core funding programme.
- 7** 2018 will see the launch of a new website which offers a user-friendly experience with improved navigation and functionality.

Caring Hands in the Community, Chatham



This project would not exist if it weren't for the help, support and ongoing generosity of Kent Community Foundation. We first became aware of them when we were simply looking for financial help with our small charity's original aim. However, over the years we have grown and developed now looking outside of ourselves to help our community. There are many, many, MANY families that we have helped and supported over the years but without KCF's help goodness only knows what would have happened to them because we are the only group in this area providing the services we offer for the family as a whole and without the KCF funding we would not have been able to do so.

Friends of Holcot

Wetwheels South East CIC, Dover



Here is just a selection of some of the grants we have made in 2017/18:

Nourish Community Foodbank – **£3253** / The Folkestone Youth Project – **£3000** / West Kent YMCA – **£4870** / Swale Young People CIC – **£3200**
 Maidstone Mediation – **£3535** / The Pegasus PlayScheme – **£4880** / Cinque Ports Community Kitchen CIC – **£1901** / Kings Reach – **£4290**
 Kent Refugee Action Network – **£3480** / Umbrella Centre of Herne Bay – **£4750** / Project Salus – **£4940** / Maidstone & Mid Kent MIND – **£4088**
 The Folkestone Youth Project – **£1600** / Demelza Hospice Care for Children – **£5000** / We Are Beams Ltd – **£2000** / It's My Life Trust Fund – **£2500**
 Friends of Foreland School – **£5500** / Thanet Community Forest School – **£5500** / Young Lives Foundation – **£4000** / Shepway Chariots – **£2000**
 Thanet Disabled Riding Centre – **£5000** / Church Street Community Project – **£3500** / The Students Exploring Marriage Trust – **£1500**
 Paddock Wood Community Advice Centre – **£7500** / Volunteer Reading Help (TA 'Beanstalk') – **£10000** / Holding On Letting Go – **£7750**
 Canterbury Shopmobility – **£731** / The Fifth Trust – **£1000** / Canterbury Cantata Trust – **£1000** / Porchlight – **£2000** / Westgate Youth Project – **£1657**
 Barham Annual Pensioners Lunch – **£300** / The Cobbes Meadow Riding and Driving Group – **£1000** / Canterbury Cathedral Choir – **£1000**
 Infinity Life Skills CIC – **£1686** / Maidstone Mediation – **£250** / Young Kent – **£5000** / Edenbridge Friendz – **£2000** / Friends Of Holcot – **£2775**
 Wetwheels South East CIC – **£5000** / Oasis Domestic Abuse Service Ltd – **£195** / Choices Limited – **£5000** / Slough Fort Preservation Trust – **£4100**
 All Saints Community Project Trust – **£250** / Citizens Advice in North & West Kent – **£2559** / Spadework Ltd – **£1640** / The Wheels on Debussy – **£2300**
 Dover Smart Project – **£4160** / Ashford and Tenterden Umbrella – **£250** / The Blackthorn Trust – **£250** / Hi Kent – **£1010** / Fusion Maidstone – **£4714**
 Citizens Advice Tunbridge Wells and District (CATWD) – **£5000** / Caring All Together on Romney Marsh – **£250** / The Garden Gate Project Ltd – **£1300**
 Ellenor – **£250** / Home-Start North West Kent – **£5000** / Home-Start Canterbury & Coastal – **£1000** / Music4Wellbeing CIC – **£4660**
 Slide Away – **£1000** / Tunbridge Wells and District Volunteer Bureau T/A Community Car Service – **£1000** / Relate Medway and North Kent Ltd – **£800**
 Chalkdown Group - Riding for the Disabled – **£675** / Smarden Therapeutic Stables CIC – **£676** / FareShare Kent CIC – **£673** / Involve Kent – **£1000**
 King's Church Medway – **£1000** / The Zone Youth Club Broadstairs – **£5000** / Maidstone Street Pastors – **£2500** / Hamstreet Coffee Morning – **£2483**
 Cruse Bereavement Care (East Kent with Swale) – **£4000** / Rubicon Cares – **£3000** / Reform Restore Respect – **£3000** / Sheppey Matters – **£4803**
 Canterbury Shopmobility – **£5000** / Dyslexia Thanet Foundation CIC – **£3060** / Young Kent – **£5000** / Time Out – **£3000** / Brogdale CIC – **£5000**
 Academy FM Folkestone – **£2500** / Sunlight Development Trust Ltd – **£4900** / Our Place Wye – **£2400** / Canterbury & District Early Years Project – **£4673**
 Medway Foodbank – **£2973** / Thanet Foodlink Ltd – **£3600** / Lyric Arts Limited – **£2804** / North West Kent Volunteer Centre – **£3700**
 Canterbury and District Ethnic Minority Independent Council – **£3900** / Arts in Ramsgate (AiR) – **£2500** / Addington Street Community Group – **£1000**
 UNLOCK National Association Of Ex-offenders Limited – **£10000** / Kent Refugee Help – **£5000** / Crossroads Care Kent – **£8000** / 51zero – **£4650**
 Maidstone Churches Winter Shelter – **£3000** / Folkestone Rainbow Centre – **£3000** / UJ Community Partnership – **£1000** / Thursday Club – **£2060**
 Ramsgate Arts Festival – **£4766** / New Leaf Support – **£5000** / Memory Lane Café Cranbrook – **£3000** / Swale Community & Voluntary Services – **£2500**
 Bexley Invicta Football Club - LGBTQIA + Friendly Team – **£1000** / Bright Shadow CIO – **£1000** / Wheel Potential CIC – **£740** / Medway Plus – **£5000**
 Team Phoenix Foundation – **£1000** / Mummy On The Mend – **£1000** / Ashford and Tenterden Umbrella – **£1000** / Bridges Centre – **£1000**
 Inspiration Creative CIC – **£500** / Sittingbourne Community College Archers Senior Section – **£1000** / Kent Mining Heritage Foundation – **£10000**
 Beltinge Community Toilet Trust – **£500** / Uprising Youth & Community CIO – **£3000** / Infinity Life Skills CIC – **£2500** / Compaed Trust – **£2000**
 Tall Ships Youth Trust – **£1500** / St George's Community Children's Project – **£2000** / Stour Festival – **£10000** / Kent Film Foundation Ltd – **£1000**
 Millmead Children's Centre Partnership Ltd – **£1000** / Street Soccer Foundation – **£3500** / Edenbridge Holiday Activities Scheme – **£2000**
 Ashford Vineyard Church – **£1500** / Slide Away – **£500** / Kent Multiple Sclerosis (MS) Therapy Centre – **£560** / Dandelion Time – **£5000**
 Kent Kindness Maidstone – **£500** / Samphire – **£7500** / Gap - A Thanet Community Project – **£2463** / Scotts Project Trust – **£2500**
 Motocross Challenge Project (MXCP) – **£2364** / The Kent Autistic Trust – **£5950** / Faversham Assistance Centre (FACE) – **£3000** / Find A Voice – **£1000**
 Swale Action To End Domestic Abuse Limited – **£2844** / Cantercare – **£4128**



/KentCommunity



@KentCommunity

KCF's enthusiasm for what we are doing and hoping to do, coupled with helpful advice, gave us the confidence to take this daunting step which has paid off.

Liz Turner, Octopus Foundation



**For further information,
to donate or set up a fund:**

admin@kentcf.org.uk | 01303 814 500

Kent Community Foundation
 Evegate Park Barn, Evegate Business Park, Ashford, Kent TN25 6SX

www.kentcf.org.uk

Charity number: 1084361 Company number: 4088589